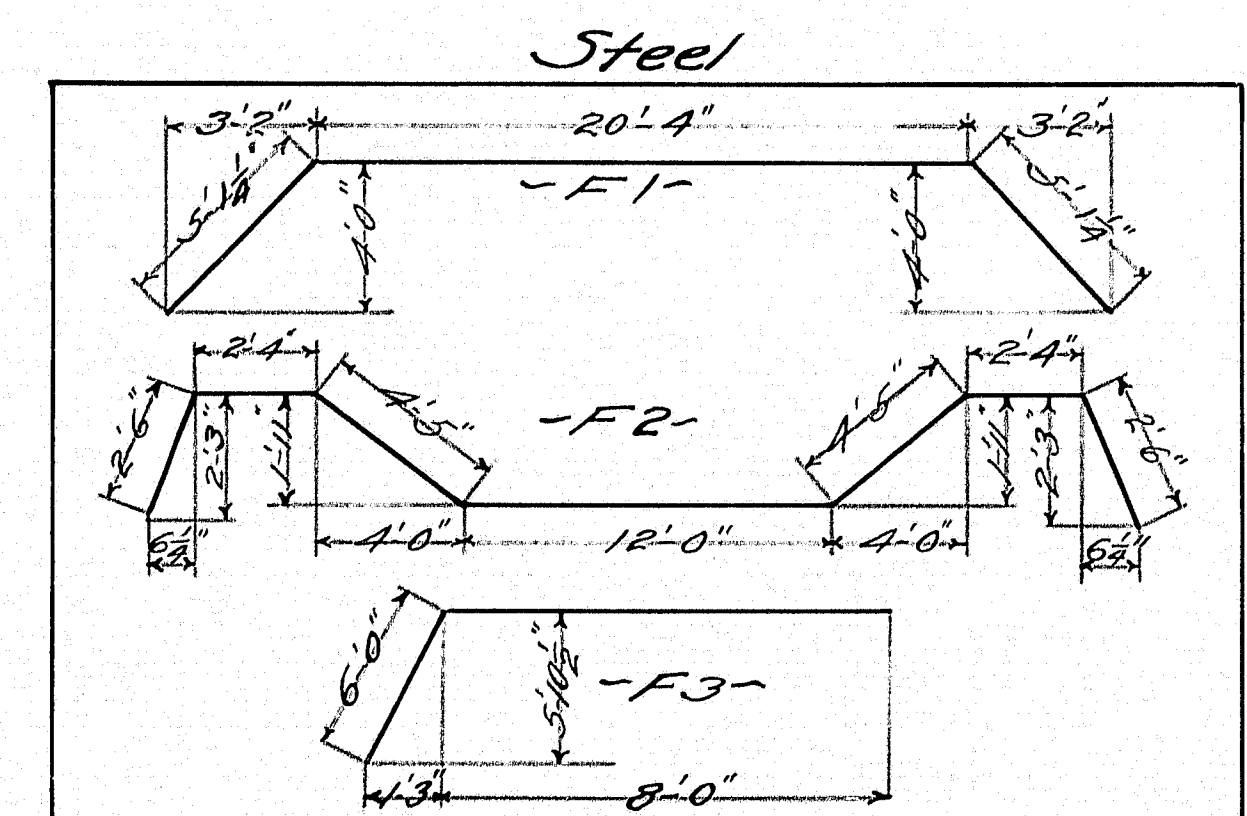


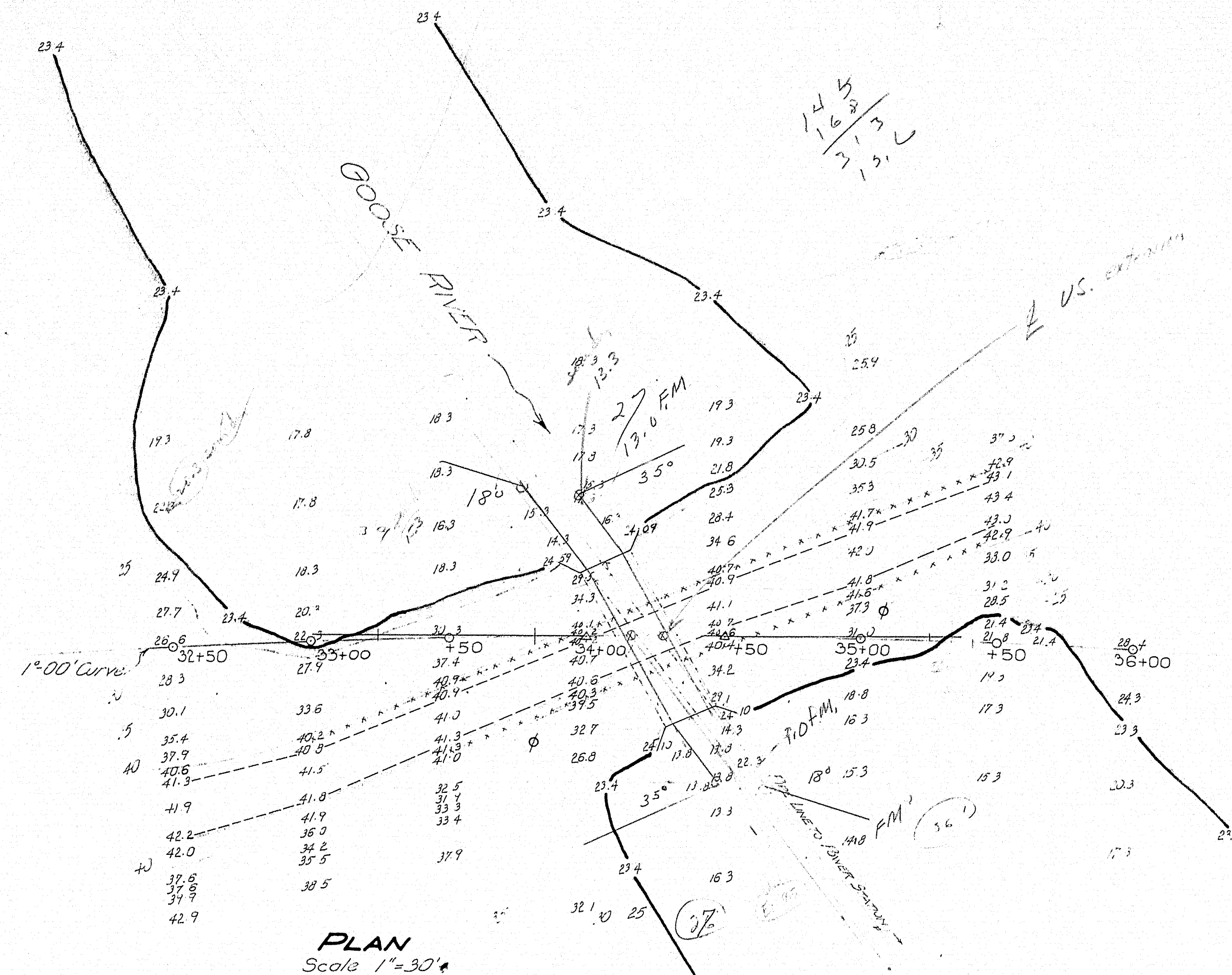
One Half Side Elevation



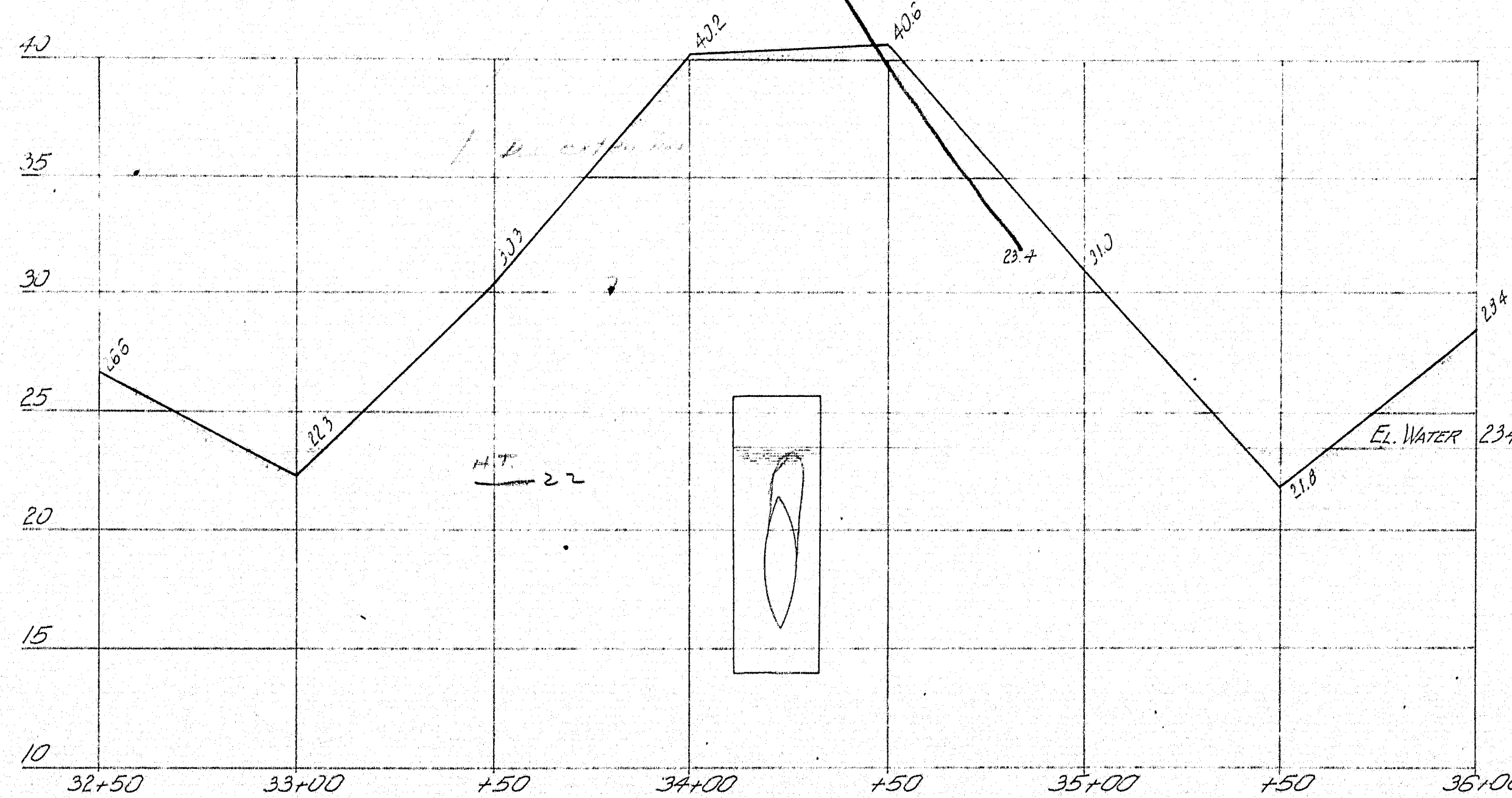
Mark	No	Reqd	Size	Length	Location
F1	93	1"	30'-6"	Slab	
F2	93	1"	30'-6"	"	
F3	186	1"	14'-0"	"	
F4	71	3/4"	6'-0"	"	
F5	136	3/4"	9'-8"	Footings	
J2	6	3/4"	60'-0"	"	
J3	6	3/4"	64'-0"	"	
J4	8	3/4"	68'-0"	"	
J5	12	3/4"	71'-0"	"	
J6	8	3/4"	70'-0"	"	
J7	8	3/4"	71'-0"	"	
J8	8	3/4"	71'-0"	"	
J9	8	3/4"	71'-0"	"	
J10	12	3/4"	71'-0"	"	
J11	40	3/4"	71'-0"	"	

Note: Contractor to maintain penstock during construction of bridge.
Parapets to be placed monolithically with floor slab.
Steel splices shall have a lap of 50 diameters.
Construction joints in footings, if any, shall be staggered with joints in abutment breast well above footing. Breast wall construction joints shall be stepped at least four feet (4'-0") horizontally. Vertical joints in succeeding days work layers to be staggered with those in preceding layers.
Estimated foundation pressure = 2 1/2 tons per sq. ft.

MAINE HIGHWAY COMMISSION
BRIDGE DIVISION
GOOSE RIVER BRIDGE
STA 34+65 HIGHWAY 'L'
BELFAST, MAINE
Scale 1/2" = 1'-0"
MEY. 9.1921



PLAN
Scale 1"=30'



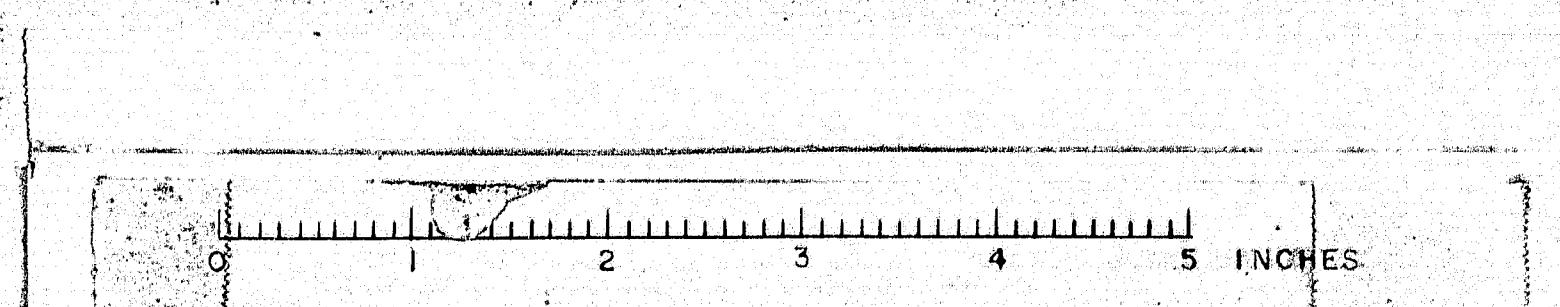
PROFILE (Survey Line) Scale Hor. 1"=30' Vert. 1"=5'

NOTES
 PILE-ROCK: 5' 6" diameter installed about 23 years ago. Central Maine Power Co. dam about 400' below bridge; built to keep water away from steel pipe line.
 EXISTING SUPERSTR.: Concrete Good condition. Short pieces of wing frame broken away Abutment built solid to slab superstructure. Superstructure in good condition - See Plans.
 STREAM: Extreme high water spring 1936 water 4.0' higher than present. Ordinary high water 1.0' higher. Low water present stage.
 FOUNDATION: Silt on top of very firm material. See sounding.
 APPROACHES: To be constructed.

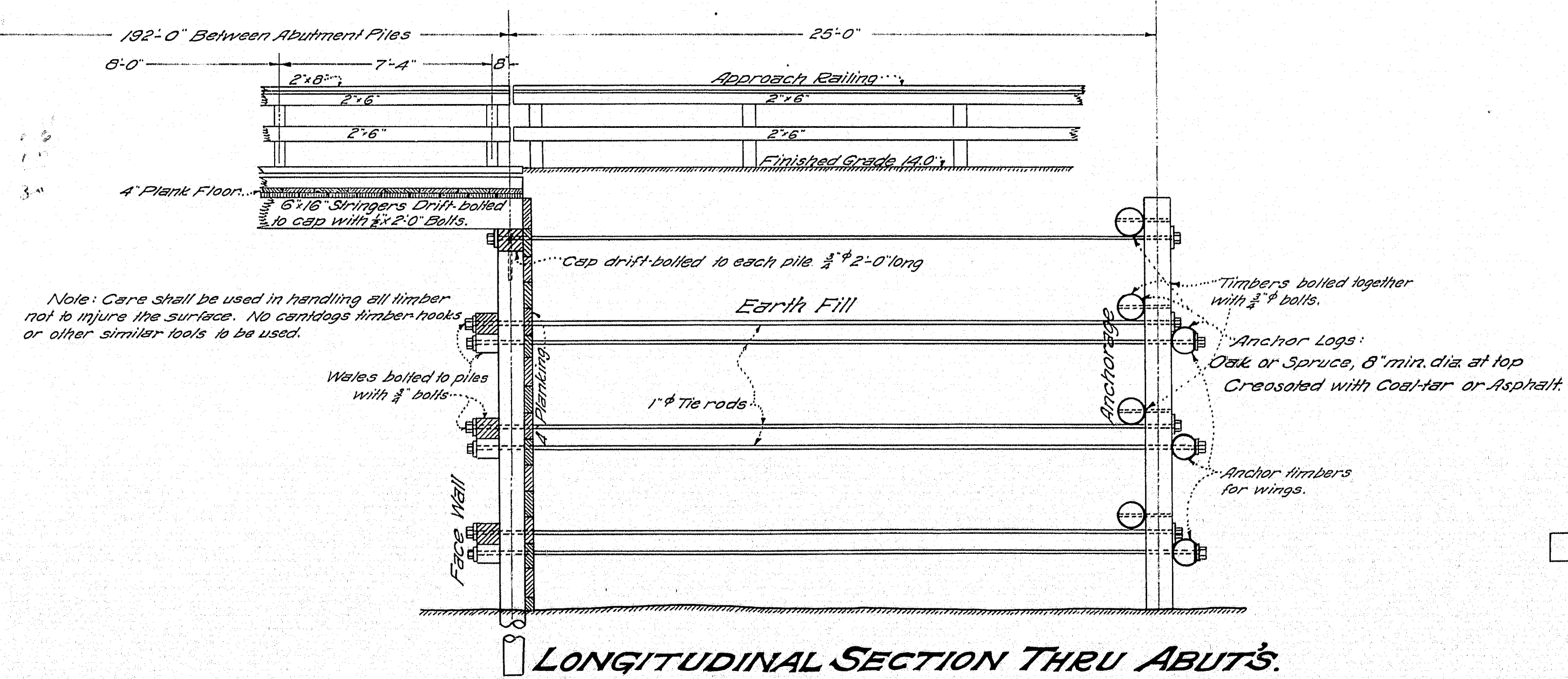
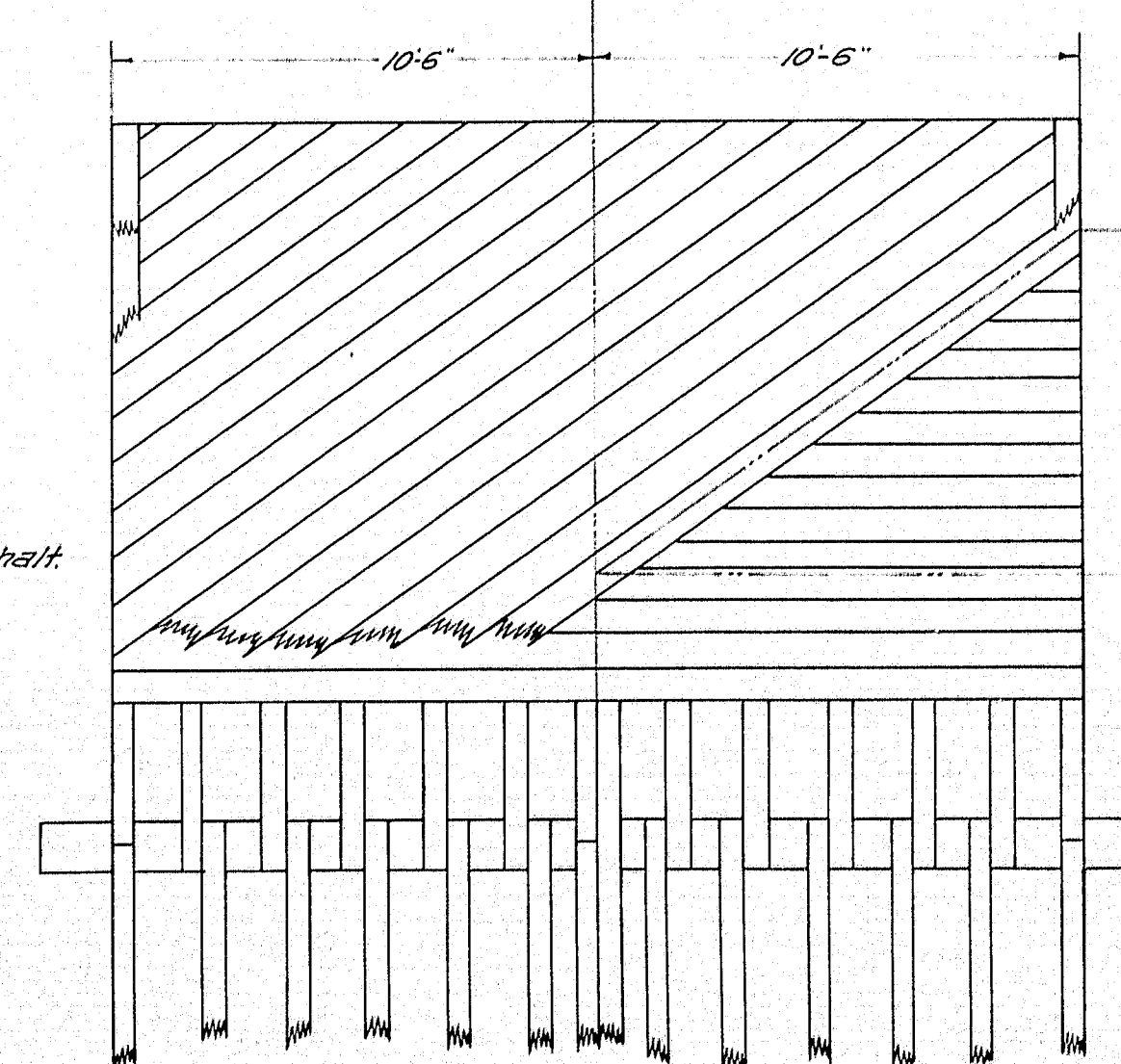
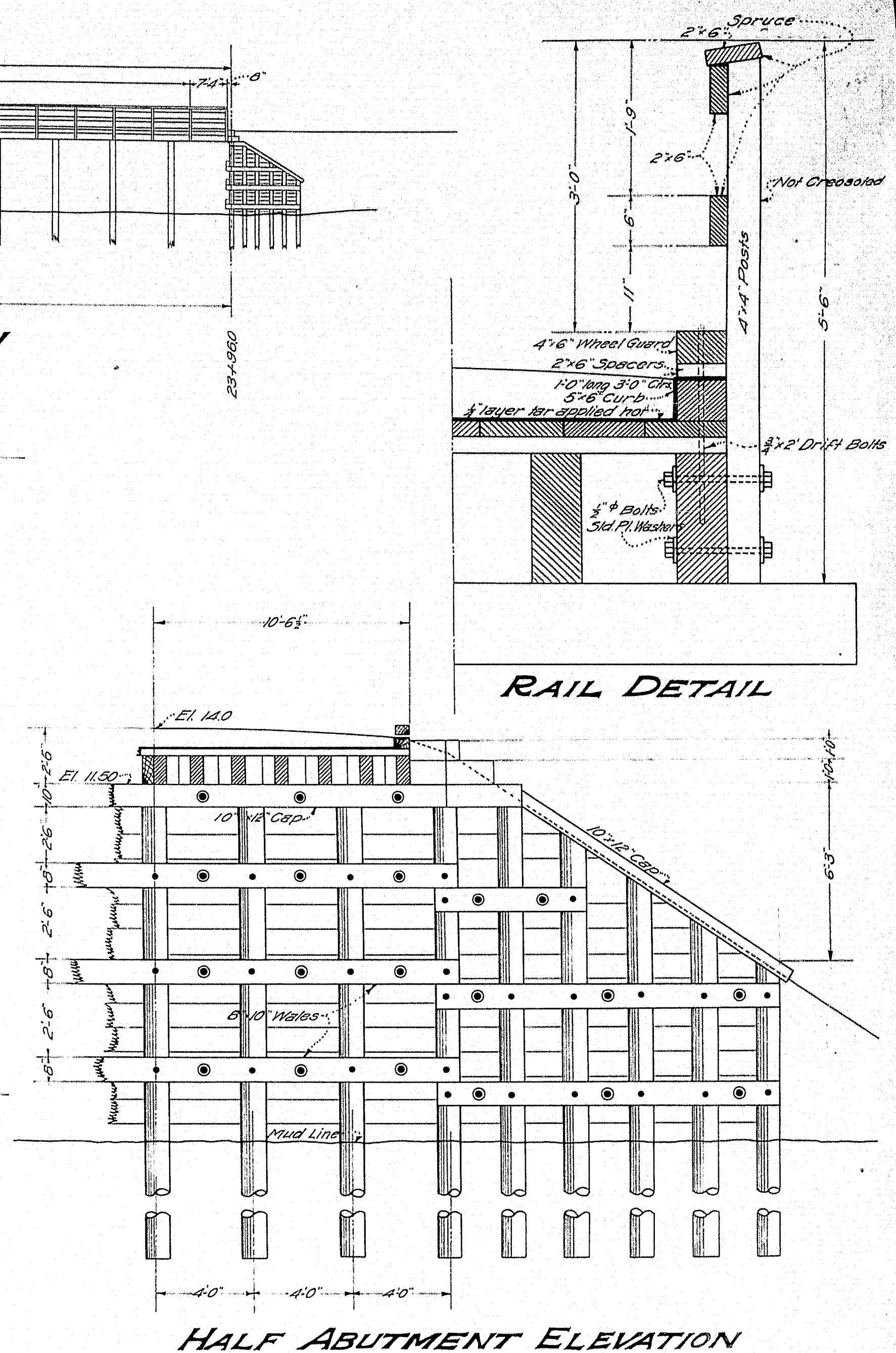
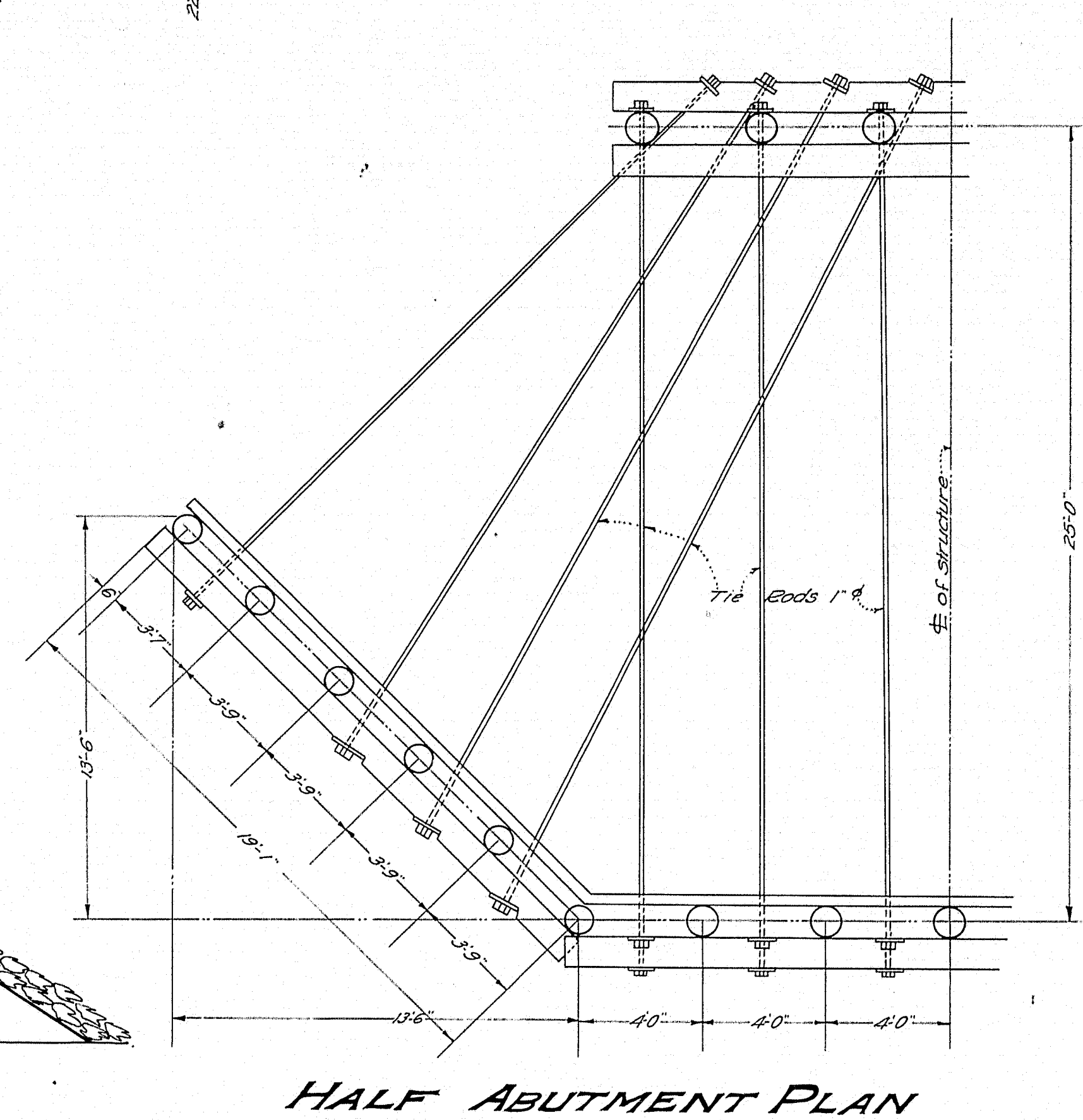
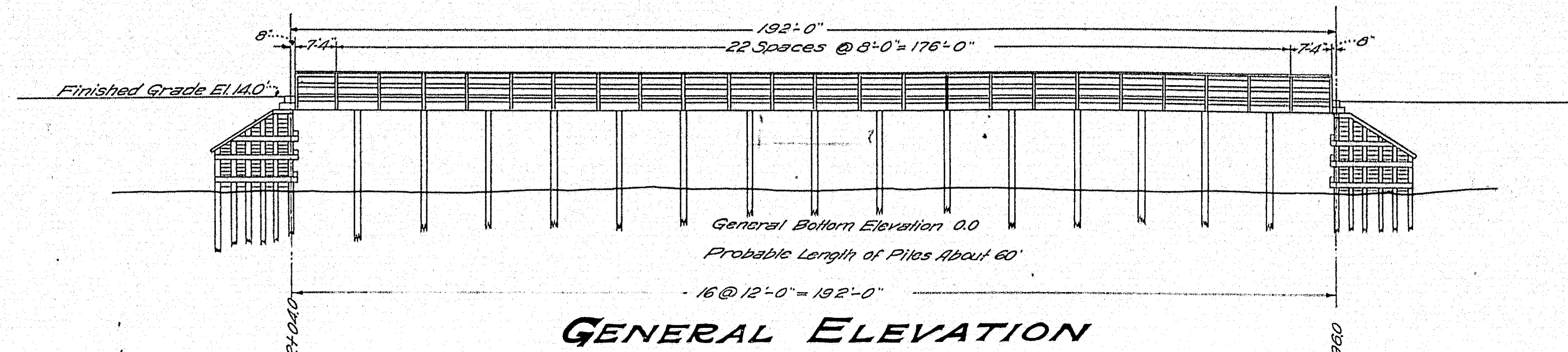
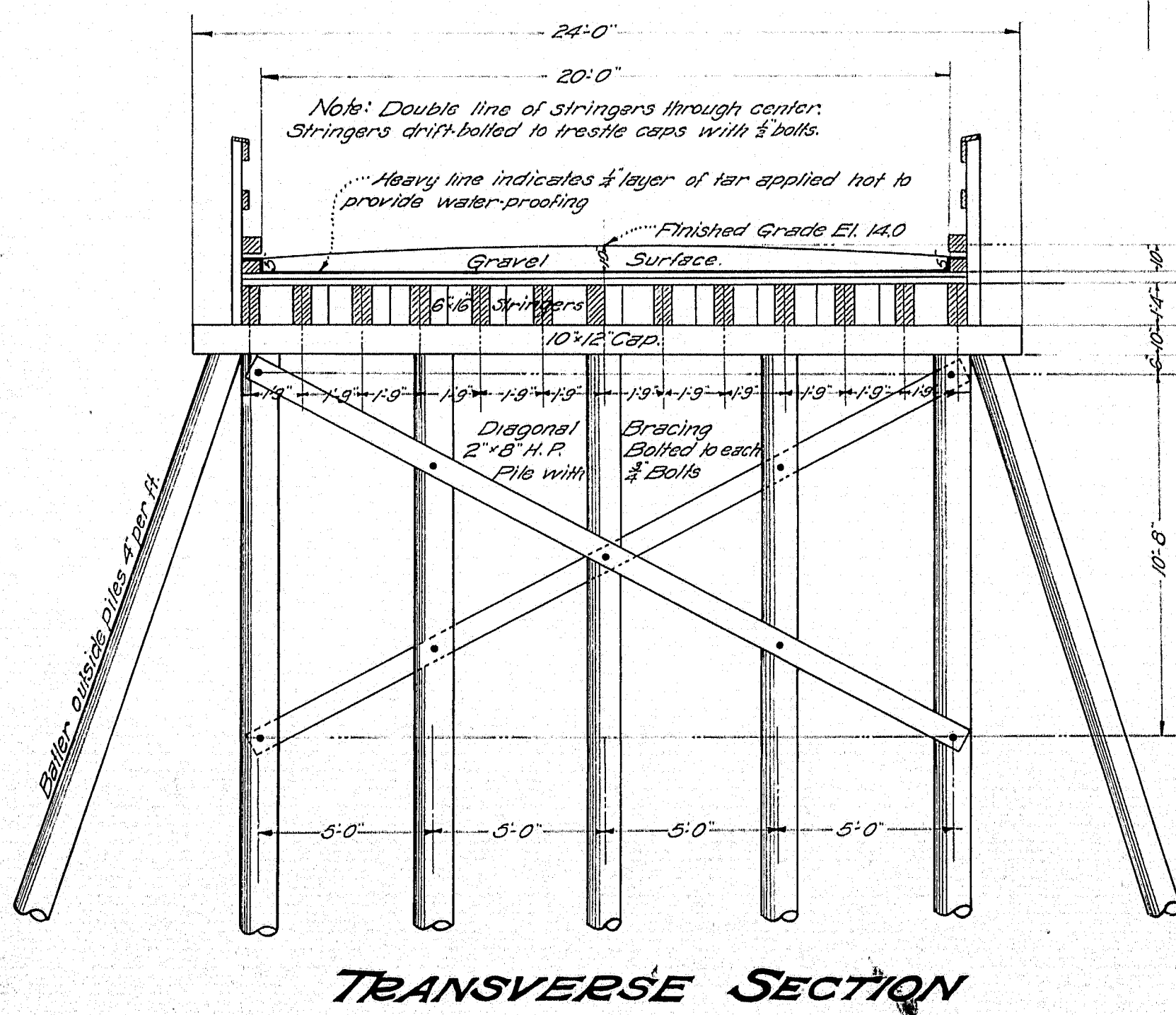
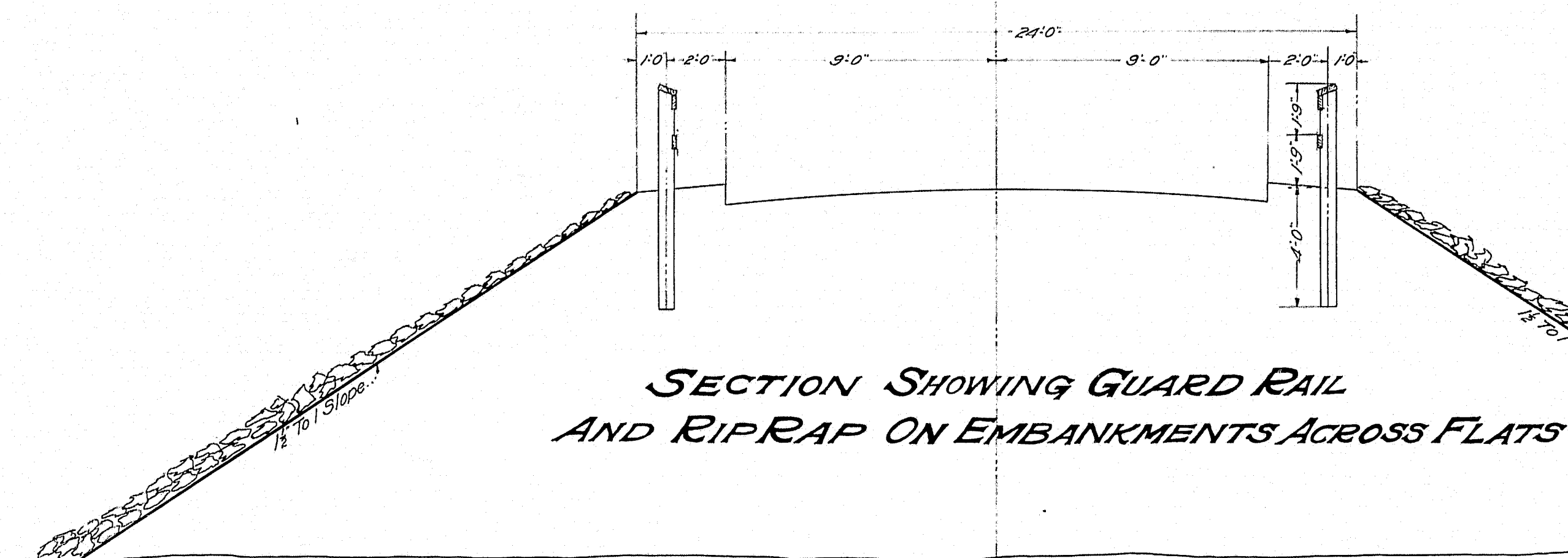
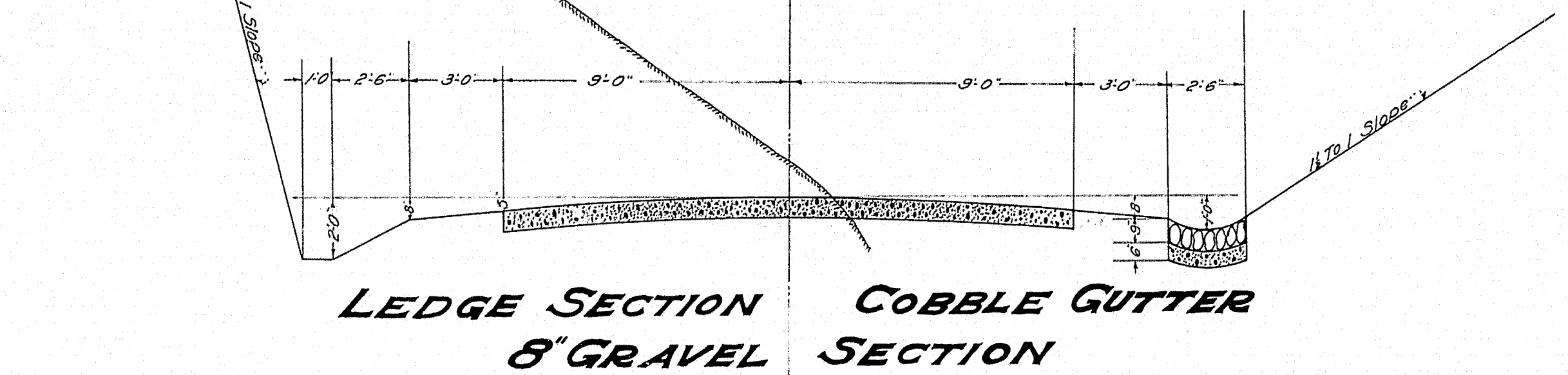
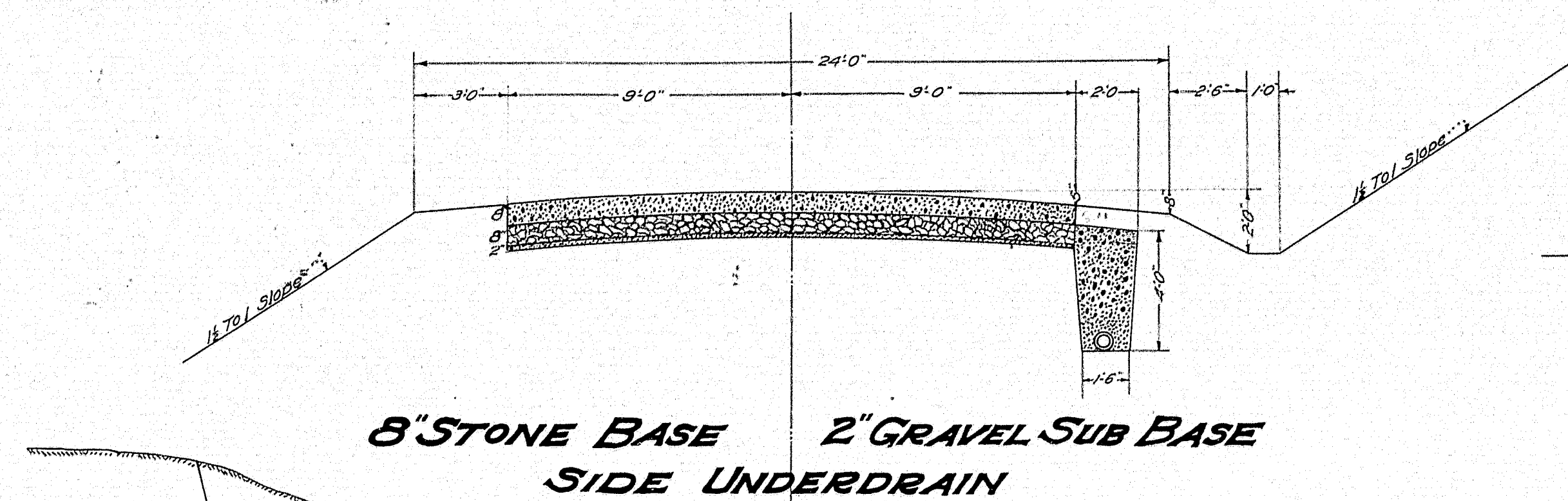
Abutment

Top of Abutment	22.0
Top of Bridge	22.5
Top of Road	23.0
Top of Stream	23.5
Top of Dam	24.0
Top of Dam	24.5
Top of Dam	25.0
Top of Dam	25.5
Top of Dam	26.0
Top of Dam	26.5
Top of Dam	27.0
Top of Dam	27.5
Top of Dam	28.0
Top of Dam	28.5
Top of Dam	29.0
Top of Dam	29.5
Top of Dam	30.0
Top of Dam	30.5
Top of Dam	31.0
Top of Dam	31.5
Top of Dam	32.0
Top of Dam	32.5
Top of Dam	33.0
Top of Dam	33.5
Top of Dam	34.0
Top of Dam	34.5
Top of Dam	35.0
Top of Dam	35.5
Top of Dam	36.0
Top of Dam	36.5
Top of Dam	37.0
Top of Dam	37.5
Top of Dam	38.0
Top of Dam	38.5
Top of Dam	39.0
Top of Dam	39.5
Top of Dam	40.0

STATE HIGHWAY COMMISSION
 BRIDGE DIVISION
GOOSE RIVER BRIDGE
 OVER
GOOSE RIVER
 IN THE TOWN OF
BELFAST-WALDO CO.
 SURVEY
 SHEET 1 OF AUGUST 1936



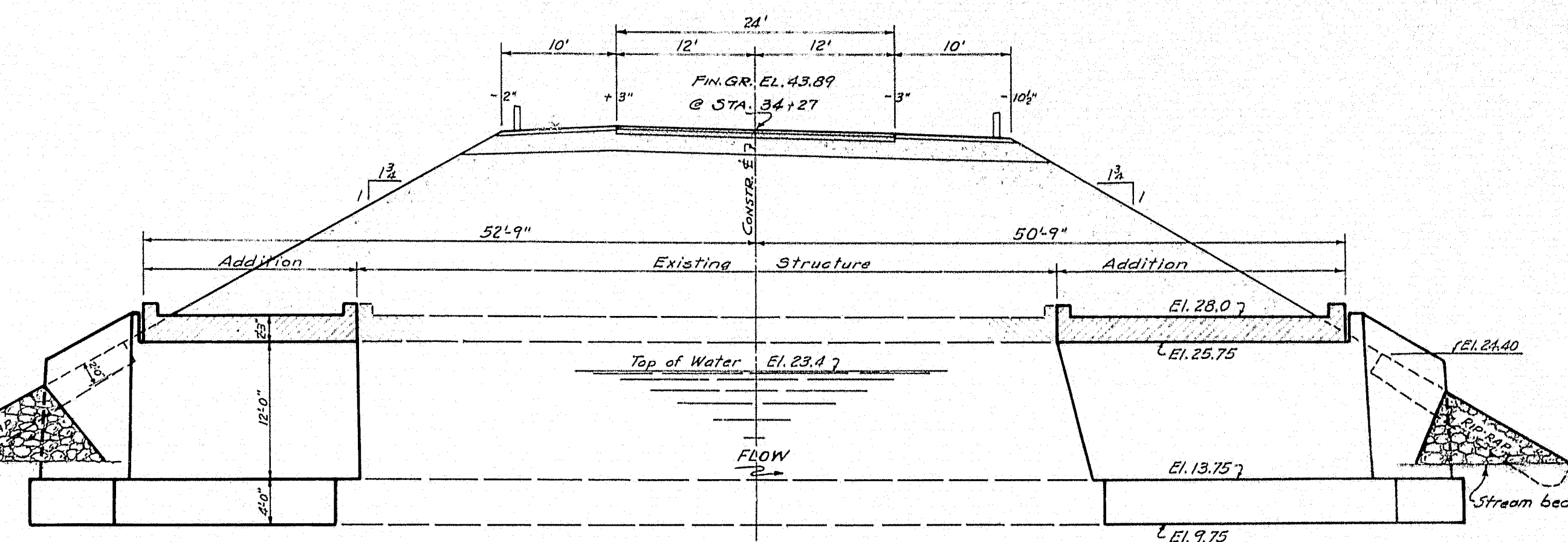
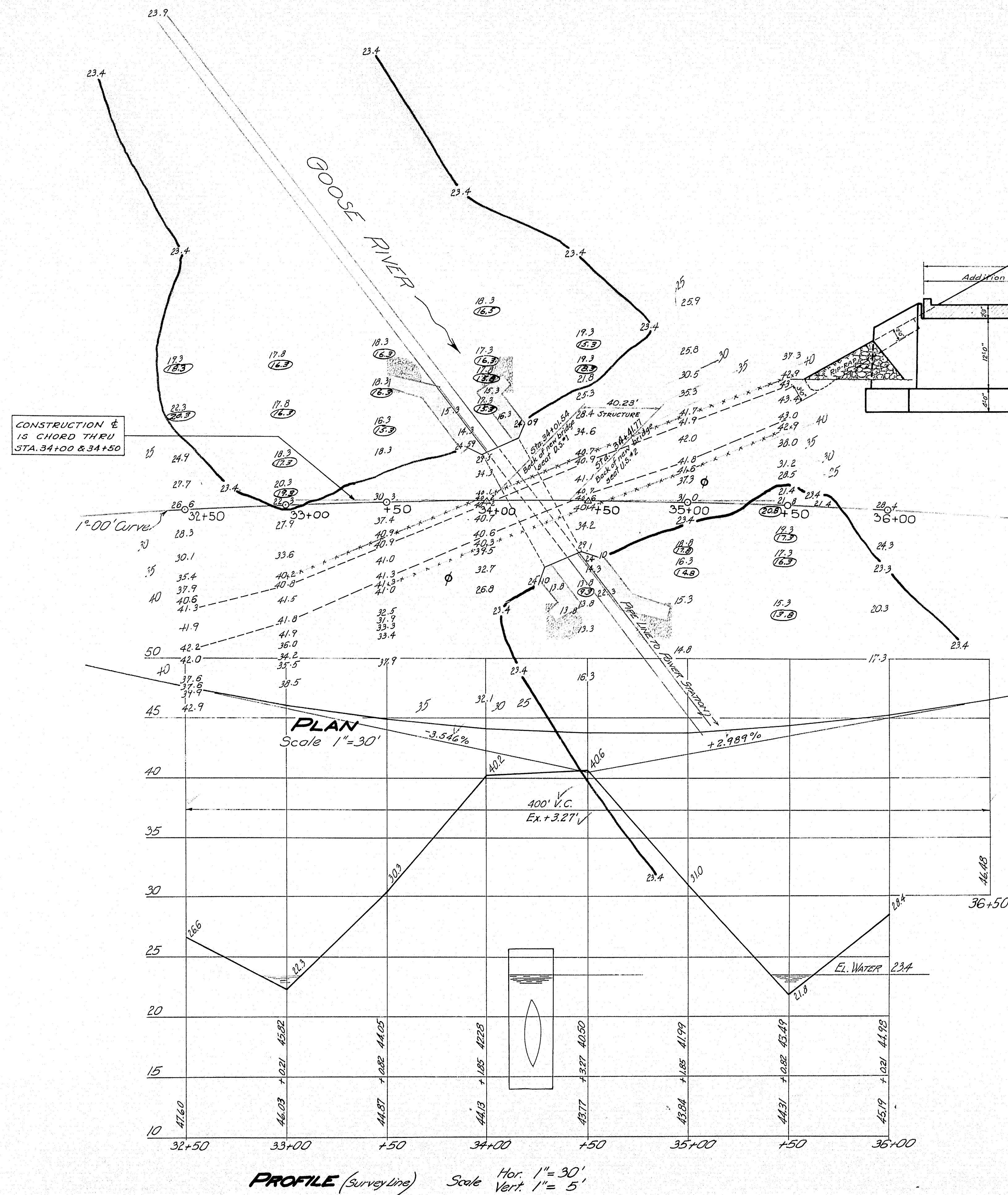
FED. ID NO.	NAME	WILLING TO SERVE	AGE	SEX	REL.
9		63	1923	2	16



FLOOR PLAN

*Showing method of planking.
2 layers 2" H.R. Plank. Bottom layer
laid at right angles to axis of Bridge.
Top layer laid at angle indicated.
Both layers have joint in center of
bridge to permit replanking half of
roadway at one time.*

ED66 COMB - GOD GAVE
M. 68



NOTES

PENSTOCK: 5'-6" diameter. Installed about 23 years ago. Central Maine Power Co. dam about 400' below bridge, built to keep salt water away from steel pipe line.

EXISTING SUBSTR.: Concrete. Good condition. Short pieces of wing have broken away. Abutment built solid to slab superstructure. Superstructure in good condition - See Plans.

STREAM: Extreme high water, spring 1936 water 4.0' higher than present. Ordinary high water 1.0' higher. Low water present stage.

FOUNDATION: Silt on top of very firm material. Elevations in O's indicate firm material.

APPROACHES: To be constructed.

Survey made by: 14-01
Plan. Hamilton Bridge: 23/19

STATE HIGHWAY COMMISSION
BRIDGE DIVISION

GOOSE RIVER BRIDGE
OVER
GOOSE RIVER
IN THE TOWN OF
BELFAST-WALDO CO.

SURVEY
SHEET 1 OF 4 AUGUSTA, MAINE DEC. 1940
M-254

